

# MAKE YOUR OWN SEASHORE CODE BOOK MARK!

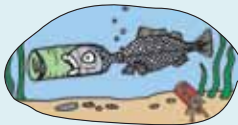
## The Seashore Code

Let someone know where you are. Make sure you know what the weather and tides will be like.



Walk carefully over rocks to avoid damage to plants and animals.

Do not take living plants or animals home. Take only photographs.



Take your litter home with you!

Report anything unusual that you find but do not touch if you are not sure it is safe.



Treat all living things with respect and replace any stone or seaweed exactly as you found it.



More Resources to help you make the most of your trip to the shore can be found on our website

[WWW.MBA.AC.UK/LEARNINGZONE](http://WWW.MBA.AC.UK/LEARNINGZONE)

**Warming temperatures and non-native invaders are impacting our seas.**

## Sealife Survey

is a public recording scheme that you can use to tell us what you saw, and where and when you saw it.

If you are unsure of identification, please send a photo.

Please submit marine life records online: [www.mba.ac.uk/recording](http://www.mba.ac.uk/recording) by phone: 01752 633291 or by email: [recording@mba.ac.uk](mailto:recording@mba.ac.uk)



You can also send a text or picture message to us on 07806 938789



All Marine life records we receive are checked and sent to the National Biodiversity Network for display on the NBN Gateway. [data.nbn.org.uk](http://data.nbn.org.uk)



[www.mba.ac.uk/recording](http://www.mba.ac.uk/recording)



PRINT AND CUT OUT THE TWO SIDES OF THE BOOK MARK, THEN STICK TOGETHER. LAMINATE IF YOU CAN TO MAKE YOUR BOOKMARK LAST LONGER!