



ID Guide

Marine Non Native Species

Please report your sighting on the MarLIN website www.marlin.ac.uk/rml or phone 01752 633291

Wakame

Undaria pinnatifida

A large, golden-brown kelp

Key ID features:

- ▶ 1-3m in length, consisting of a divided frond with a mid-rib
- ▶ Very frilly with lots of "ribbons" just above the root-like holdfast
- ▶ Has a long stipe



JOHN BISHOP / MBA OF THE UK

Similar to: native kelps such as *Saccorhiza polyschides* which does not have a mid-rib and has a knobbly, bulbous - holdfast



JOHN BISHOP / MBA OF THE UK

Wireweed

Sargassum muticum

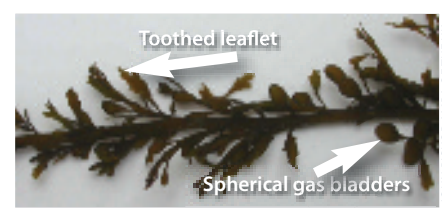
A type of brown seaweed

Key ID features:

- ▶ A large olive-brown seaweed with fronds often over 1m long
- ▶ A main axis or stipe bears alternating secondary branches, giving characteristic "washing line" appearance out of water
- ▶ Branches with small, flattened leaflets and spherical gas bladders



LIZ COOK



Toothed leaflet

Spherical gas bladders

JOHN BISHOP / MBA OF THE UK

Orange-striped anemone

Haliplanella lineata

An anemone

Key ID features:

- ▶ Up to 4cm tall, (usually 1-2cm) with a smooth and cylindrical column
- ▶ Generally olive green or brown with contrasting vertical stripes (stripes are usually orange in colour, less commonly yellow or white stripes)
- ▶ Up to 100 slender tentacles, these and their supporting platform greyish



PATRICK VAN MOER

Distinguished by: the vertical stripes on the column. Young specimens of plumose anemone (*Metridium senile*) may be similar in general form, but are never striped



ANDREW COHEN



JOHN BISHOP / MBA OF THE UK

Darwin's barnacle

Elminius modestus

A barnacle

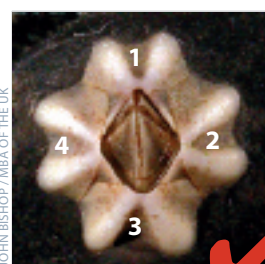
Key ID features:

- ▶ Small cone shaped shell up to 1cm across
- ▶ White-grey in colour
- ▶ Diamond shaped opening
- ▶ Shell has 4 plates



NOVA MIESZKOWSKA / MBA OF THE UK

Similar to: *Semibalanus balanoides*, which also has a diamond-shaped opening. *Elminius modestus* can be positively identified by only having four outer shell plates, other species have six



JOHN BISHOP / MBA OF THE UK



JOHN BISHOP / MBA OF THE UK

Striped barnacle

Balanus amphitrite

A barnacle

Key ID features:

- ▶ A white or pinkish barnacle growing to 1cm in diameter or more
- ▶ Large diamond shaped opening
- ▶ Six outer shell plates relatively smooth, with groups of purple or pink stripes tapering from the base
- ▶ Four dark bands cross tissue flaps bordering the opening



JOHN BISHOP / MBA OF THE UK



JOHN BISHOP / MBA OF THE UK

Japanese skeleton shrimp

Caprella mutica

An amphipod crustacean

Key ID features:

- ▶ A slender, reddish, shrimp-like animal
- ▶ Males up to 45mm long with two elongated body segments behind the head, the hindmost of which has a pair of large grasping appendages
- ▶ Females smaller (to 15mm) without conspicuously elongated segments or enlarged appendages, but with red spotted brood pouch on underside
- ▶ Both sexes have spines along back
- ▶ Larger than native skeleton shrimps



THOM NICKELL



JOHN BISHOP / MBA OF THE UK

Chinese mitten crab

Eriocheir sinensis

A crab

Key ID features:

- ▶ Large crab up to 8cm across
- ▶ Grey-green to dark brown in colour with paler legs, which are twice the length of the body.
- ▶ Near-hexagonal body shape narrowing towards the front



PHIL CRABB / NATURAL HISTORY MUSEUM



PHIL CRABB / NATURAL HISTORY MUSEUM

- ▶ 4+4+4 pattern of teeth around front end of body and deep central notch between the eyes
- ▶ Distinguishing feature in adult crabs is the dense mat of hair on the claws. The leading edges of the legs are also very hairy

Pacific oyster

Crassostrea gigas

A bivalve mollusc

Key ID features:

- ▶ Thick, rough, hinged shell up to 18cm long
- ▶ Markedly wavy or saw-toothed shell margin
- ▶ Shell may have dark purple patches



GUY BAKER / MBA OF THE UK

Similar to: Native oyster *Ostrea edulis*, which has more numerous but much weaker ridges and much less wavy shell margin. *Crassostrea gigas* tends to be more elongate in shape whereas *Ostrea edulis* can be almost circular



KEITH HISCOCK / MBA OF THE UK

Slipper Limpet

Crepidula fornicata

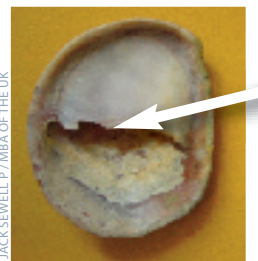
A gastropod mollusc – a type of sea snail

Key ID features:

- ▶ Often found in curved chains of up to 12 individuals with large shells at the bottom and smaller ones on top



KEITH HISCOCK



JACK SEWELL P / MBA OF THE UK

- ▶ Domed shell, oval or kidney shaped up to 5cm long with distinctive slipper-like internal shelf
- ▶ Shell can be white, cream, yellow or pinkish in colour, with streaks or blotches of red or brown

Leathery sea squirt

Styela clava

A sea squirt

Key ID features:

- ▶ A brown sea squirt up to 20cm tall
- ▶ Attached by narrow stalk (underdeveloped when very small)
- ▶ Two tube like openings (siphons) on top which have dark brown stripes on the inside



CHRISTINE BEVERIDGE



JOHN BISHOP / MBA OF THE UK

- ▶ Surface is tough and leathery, looks lumpy.



JOHN BISHOP / MBA OF THE UK